



MindManager® 8

Revolutionizing the way people engage with information, ideas and each other.

Free your mind with Mindjet MindManager's highly interactive, visual application. Capture limitless ideas, data and knowledge to organize and provide focus to any task or project.

**Some people call it mind mapping.
You'll call it your competitive advantage.**

WHAT IS A MIND MAP?

It's an interactive, visual diagram that looks like a tree with a main topic in the middle and as many sub-topics as you like exploding out in branches. Sub-branches can have mini-branches. The branches are easy to add or move. Information in a visual format makes it more memorable, gives it context, and unveils patterns and relationships that are difficult to see in a linear document.

Access the right information, when you need it:

- Consolidate multiple sources of information into one map for a complete information dashboard.
- Easily set up your map to display dynamic Web content and feeds so you don't miss a thing.
- Search and add information from the Web, databases and local files and view it all in your maps.

Stay in the zone and maintain your laser focus:

- Explore the big picture and the details visually, in a freeform yet organized way.
- Improve how you manage projects and map nearly any type of process.
- Facilitate greater innovation with unique perspectives on information.

Communicate your ideas to the world (or just your corner of it):

- Share maps of ideas, visions and plans with key stakeholders.
- Establish greater accountability by enabling team members to track roles, responsibilities and deadlines.
- Align teams to manage the information that matters, make well-informed decisions and move swiftly into action.

NEW FEATURES

Mindjet Player

Share your maps with everyone in dynamic Adobe PDF or Adobe Flash formats. Easily publish Flash maps in websites and blogs.

Automated Task Management

Manage your project plan more effectively with the automatic calculation of task information and completion percentages.

Integrated Microsoft Office File Editing

View and edit Microsoft files directly within MindManager.

Integrated Web Services

Add easy-to-use Web services to your maps to access online data from Google, Yahoo, Amazon, Microsoft, Facebook, Strikelron, and more.

Embedded Web Browser

View Web pages and PDF documents without leaving your MindManager map.

Database Linker

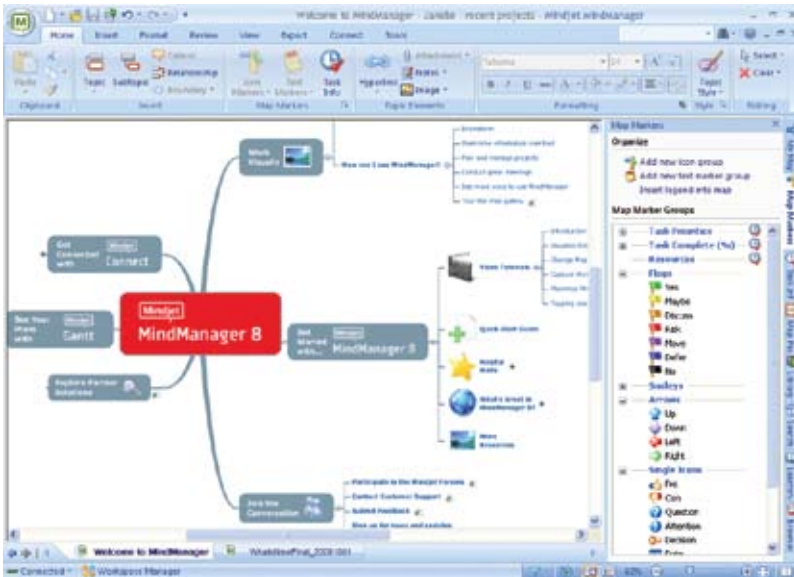
Interact with your corporate data visually (Oracle, MySQL, DB2, MS SQL Server, Access, Excel, CSV or text files).

Mindjet GmbH
European Headquarters
Siemensstrasse 30
63755 Alzenau, Germany
www.mindjet.com

Mindjet (UK) Ltd.
1000 Great West Road
Brentford
TW8 9HH, United Kingdom
www.mindjet.co.uk

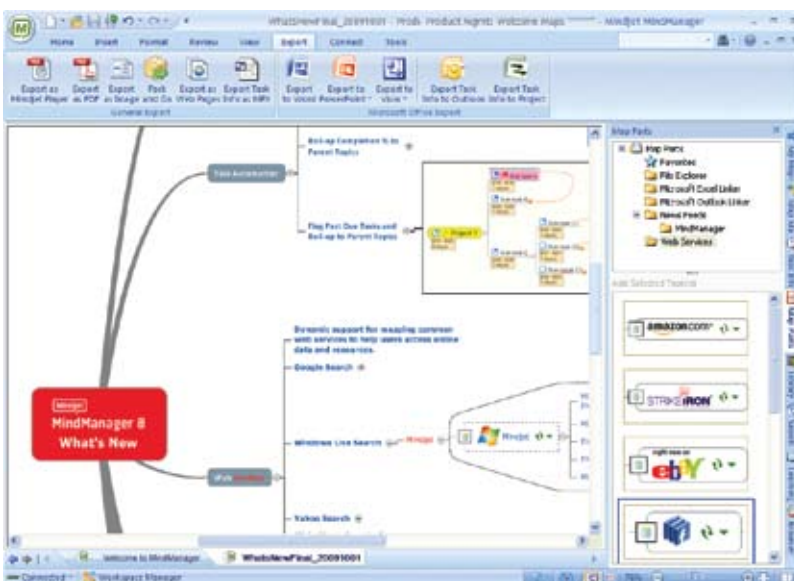


MindManager® 8



MindManager is an invaluable tool to streamline any business task, giving you a “visual” advantage.

- **Brainstorm freely**
- **Manage projects better**
- **Create winning business plans**
- **Prepare & deliver engaging presentations**
- **Plan & facilitate interactive meetings**
- **Increase your productivity**
- **And more!**



SUPPORTED OPERATING SYSTEMS:

- Microsoft® Windows® 7 32-bit and 64-bit
- Microsoft Windows Vista® 32-bit
- Microsoft Windows XP Professional, Home or Tablet PC Editions 32-bit
- Microsoft Windows Server® 2003 32-bit
- Microsoft Systems Management Server using Windows Server 2003 32-bit
- Citrix MetaFrame Presentation Server 4.5

SYSTEM REQUIREMENTS:

- IBM or compatible Pentium® processor (700 MHz or greater)
- 256 MB RAM or greater, 512 MB RAM or greater on Vista
- 150 MB disk space and 50 MB more during installation
- SVGA (1024 x 768/16-bit color or greater)
- Microsoft .NET 2.0 or higher

ADDITIONAL REQUIREMENTS TO USE CERTAIN FEATURES:

- Microsoft Office Professional 2002/XP, 2003 or 2007
- Microsoft Project® 2002, 2003 or 2007
- Microsoft Visio® Professional 2002, 2003, or 2007
- Microsoft Internet Explorer® 6.0 or greater
- Mozilla® Firefox® 2.0 or greater
- Adobe® Acrobat® 9 or greater
- Adobe Flash® Player
- Internet Connection

Quickly capture ideas and explore details visually

- **Visual Elements** – Focus your ideas and tasks with a broad selection of icons and text markers. Easily format lines, topics & text to provide more clarity.
- **Attachments, Hyperlinks and Notes** – Include other sources of information from documents, folders, Web content or maps. When working with Microsoft Office, you can view and edit files directly within MindManager.
- **Map Filters** – See only the data you need to see by defining your own selection criteria.
- **Microsoft Integration** – Import Outlook, Word, and Project files. Export to Outlook, Word, PowerPoint, Project and Visio. Edit Microsoft Office documents directly within MindManager.
- **Task Automation** – Automatic summation of task, start dates, end dates and level of completion.
- **Web Services** – Insert dynamic data, images and search results from common Web applications like Google, Yahoo, eBay and Facebook.